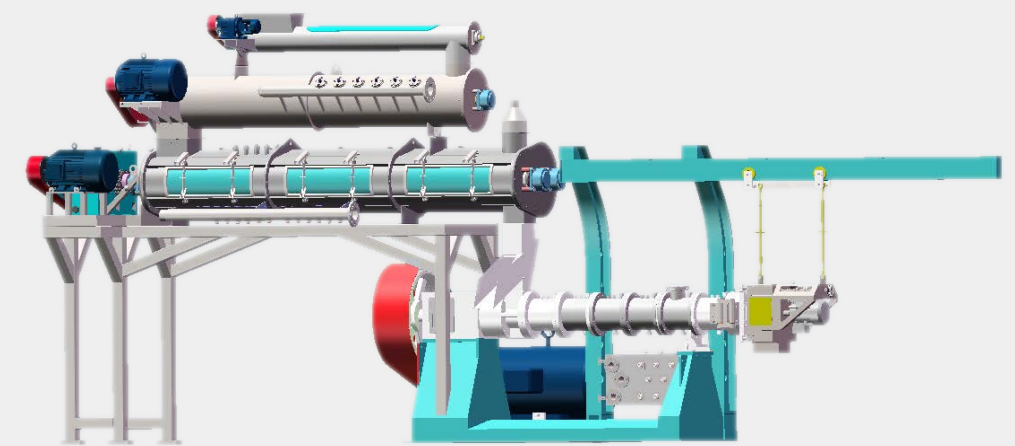
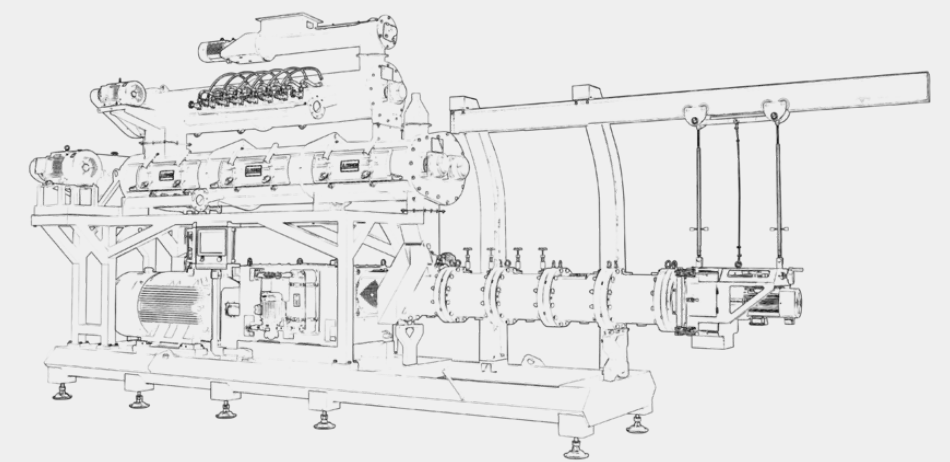


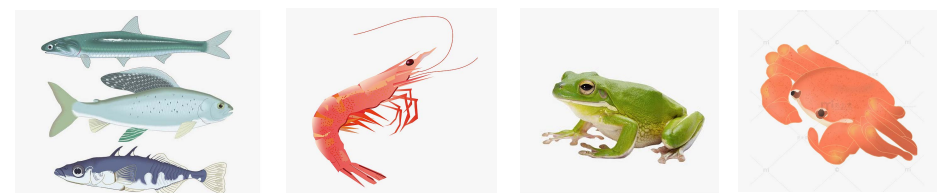


# S / D Series

## Screw Extruder



We reserve the right to make technical changes without prior announcement. All rights reserved.  
©2020 HENAN SINOVO MACHINERY ENGINEERING CO., LTD.



[WWW.SIMECPELLET.COM](http://WWW.SIMECPELLET.COM)

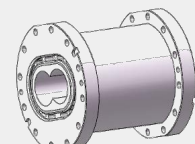
# SCREW EXTRUDER

## D Series

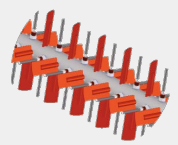
Double screw design. Applicable to production and processing of various floating, sinking and slowly sinking aquatic feed. Applicable to the production and processing of pet food.



Overload Protection Clutch



High Precision Forging Expansion Chamber



High Efficiency Conditioner

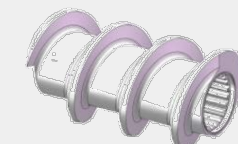


Kneading Block D2 Steel

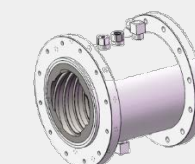
- ◆ High life gear box; Wear resistant alloy screw bushing; Screw service life > 22,000 tons (132\*2)/ 40,000 tons (155\*2). bushing service life > 50,000 tons (132\*2) / 60,000 tons (155\*2). gear box free warranty 30,000 hours.
- ◆ High-precision forging double jacket for expansion chamber. Sufficient strength to prevent jacket deformation or wear sleeve loosening enable to heating or cooling.
- ◆ Over load protection clutch is equipped to ensure the stability, safety and reliability of driving. High precision gears, imported high qu bearing with oil seal, advanced gear box design and processing control technology.
- ◆ Equal clearance and self-cleaning double screw device can effectively reduce material residues in screw of machine barrel Convenient for machine barrel cleaning.
- ◆ Removable wearable bushing of special material greatly reduce the cost of use.
- ◆ The shear force can be effectively controlled to ensure that the curing time of all materials in the expansion chamber is consistent with particle expansion coefficient
- ◆ Effectively distribute reasonable shear force in different areas of the extrusion chamber. Effectively improve the output in the premise of high quality.
- ◆ Turbulence discharge device make extruded feed more pleasing to the eye. The output of small-hole diameter mold can be increased by 30%–40%. The shape is uniform and stable
- ◆ The automatic control system simplifies the operation and reduces the labor intensity. It make all data recorded and the influence of operators on the quality of expanded products is minimized.

## S Series

Single screw design. Applicable to production and processing of various floating, sinking and slowly sinking aquatic feed. Applicable to the production and processing of pet food.



Long Service life of Screw



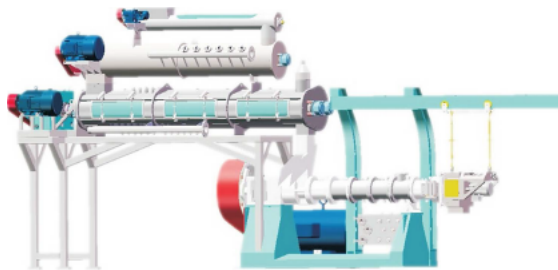
High Precision Forging Expansion Chamber

- ◆ New type of material is adopted to lengthen the service life of wearing part by 2–3 times. The service life of screw can reach 8,000–10,000 tons.
- ◆ Produce  $\varnothing 3.0\text{mm}$  ti Japia feed, the capacity of extruder can reach 4–5.5 t/h.
- ◆ Equipped with high precision extruder cavity, the strength is sufficient to prevent deformation of jacket or loose of wear-resistant bushing. Can be heated or cooled.
- ◆ Flexible combination chamber and combined single screw provide better combination scheme for production of various materials. Quickly change structure, convenient to produce various of floating feed, settling feed pet food and full-fat soybean.
- ◆ Effectively save energy, reduce energy consumption and production cost.





S Series					
Model	SDE 93*2	SDE 120*2	SDE 132*2	SDE 155*2	SDE 175*2
Main Motor Power (KW)	110	160/200	200/250	315/355	630
Feeding Power (KW)	1.5	2.2	2.2	3.0	5.5
Single-axis Conditioning Power(KW)	4	11	11	15	30
DDC Power (KW)	11	15	18.5	22	30
Capacity (t/h)	1~3	3~5	5~8	8~10	13~16
Used Cases based on SDE132*2 model					
Feed Type	Yellow Catfish Feed (Floating)	Grass Carp Feed (Floating)	Frog Feed (Floating)	Crab Feed (Sinking)	Lobster Feed (Sinking)
Die Hole Diameter (mm)	φ 2.0	φ 3.0	φ 4.0	φ 4.5	φ 3.0
Floating/Sinking Rate (%)	100%	100%	100%	100%	100%
Density (g/l)	385	350	335	660	680
Expansion Degree	1.68	1.66	1.83	1.20	1.01
Capacity (t/h)	5.83	6.83	7.82	5.76	5.08



D Series		
Model	SSE135	SSE165
Main Motor Power (KW)	1600 x 1225 x 1850	2710 x 1270 x 1850
Feeding Power (KW)	400 x 480	800 x 480
Single-axis Conditioning Power(KW)	600	640
DDC Power (KW)	Φ 276	Φ 276
Capacity (t/h)	13/7.7	14

# SUCCESS CASES

